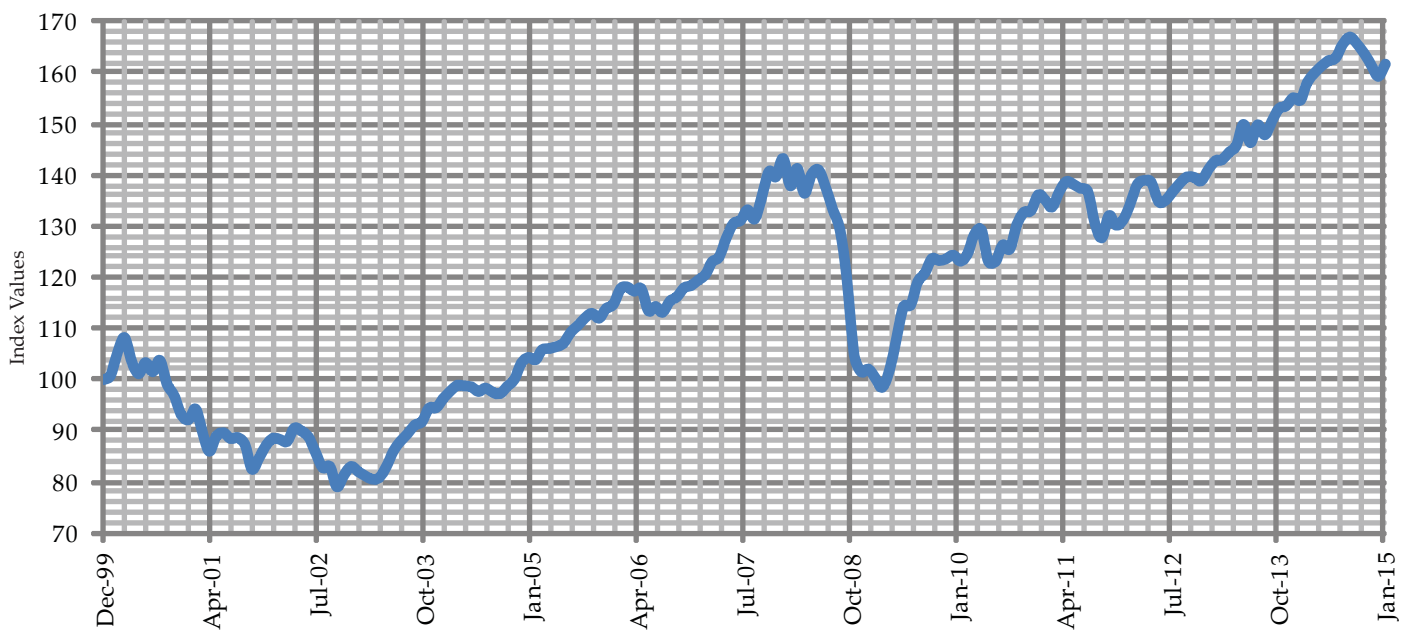


Eurekahedge Islamic Fund Index



Top 10 Yield-to-Date Returns for ALL Funds

Fund	Fund Manager	Performance Measure	Fund Domicile
1 Meezan Tahaffuz Pension - Equity Sub	Al Meezan Investment Management	9.35	Pakistan
2 CIMB Islamic Greater China Equity	CIMB-Principal Asset Management	9.03	Malaysia
3 Meezan Islamic	Al Meezan Investment Management	8.30	Pakistan
4 Al Meezan Mutual	Al Meezan Investment Management	7.97	Pakistan
5 Taurus Ethical B	Taurus Asset Management	6.85	India
6 Riyadh Equity 2	Riyad Bank	5.49	Saudi Arabia
7 CIMB Islamic Asia Pacific Equity - MYR	UOB Asset Management	4.91	Malaysia
8 Meezan Balanced	Al Meezan Investment Management	4.81	Pakistan
9 CIMB Islamic Equity	CIMB-Principal Asset Management	4.41	Malaysia
10 Islamic Balanced Income	Riyad Bank	3.99	Saudi Arabia
Eurekahedge Islamic Fund Index		1.50	

Based on 56.00% of funds which have reported January 2015 returns as at the 9th February 2015

Top 10 Sharpe Ratio for ALL Funds since Inception

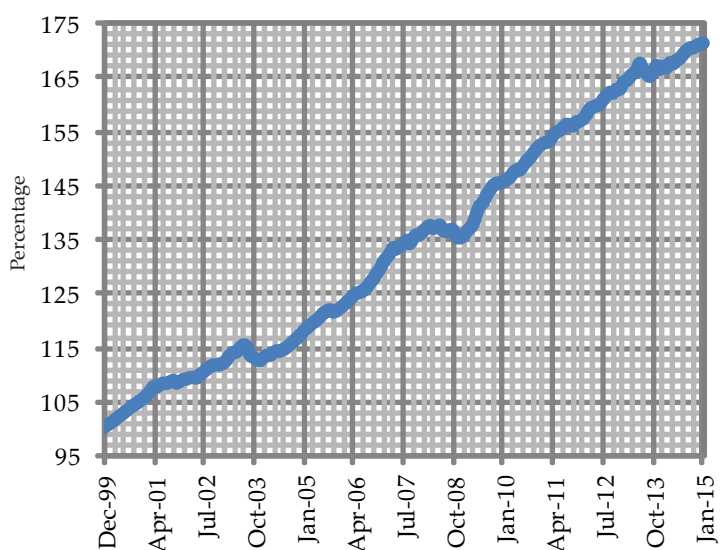
Fund	Fund Manager	Performance Measure	Fund Domicile
1 Meezan Tahaffuz Pension - Money Market Sub	Al Meezan Investment Management	8.96	Pakistan
2 Meezan Tahaffuz Pension - Debt Sub	Al Meezan Investment Management	5.13	Pakistan
3 Commodity Trading - SAR	Riyad Bank	2.12	Saudi Arabia
4 QInvest Edgewood Sharia'a	QInvest	1.12	Cayman Islands
5 Taurus Ethical B	Taurus Asset Management	1.07	India
6 Alkhair Capital Istanbul	Alkhair Portfoy Yonetimi	1.04	Turkey
7 BLME Sharia'a Umbrella SICAV-SIF Global Sukuk - Class A USD	Bank of London and The Middle East	0.95	Luxembourg
8 QInvest Eagle Sharia'a	QInvest	0.78	Cayman Islands
9 Meezan Tahaffuz Pension - Equity Sub	Al Meezan Investment Management	0.72	Pakistan
10 QInvest GAM Sharia'a	GAM International Management	0.72	Cayman Islands
Eurekahedge Islamic Fund Index		0.15	

Based on 56.00% of funds which have reported January 2015 returns as at the 9th February 2015

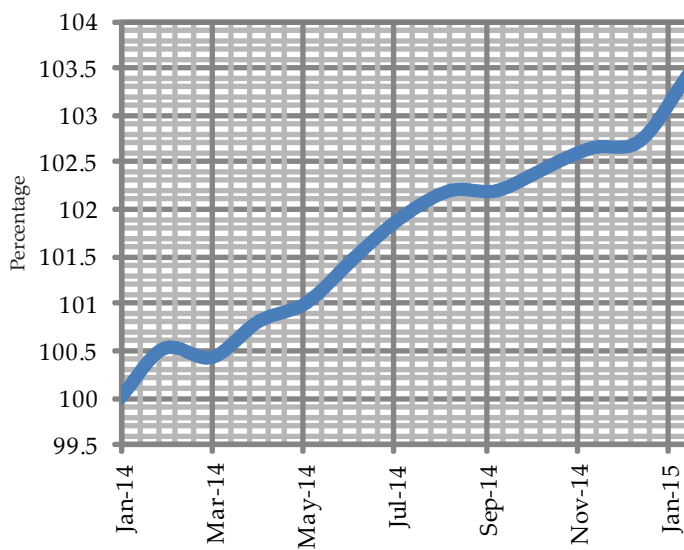
Comprehensive data from Eurekahedge will now feature the overall top 10 global and regional funds based on a specific duration (yield to date, annualized returns, monthly returns), Sharpe ratio as well as delve into specific asset classes in the global arena – equity, fixed income, money market, commodity, global investing (which would focus on funds investing with global mandate instead of a specific country or geographical region), fund of funds, real estate as well as the Sortino ratio. Each table covering the duration, region, asset class and ratio will be featured on a five-week rotational basis.

FUNDS TABLES

Eurekahedge Islamic Fund Fixed Income Index over the last 5 years



Eurekahedge Islamic Fund Fixed Income Index over the last 1 year



Top 10 Islamic Fixed Income Funds by 3 Months Returns

Fund	Fund Manager	Performance Measure	Fund Domicile
1 Meezan Islamic Income	Al Meezan Investment Management	2.43	Pakistan
2 Meezan Tahaffuz Pension - Debt Sub	Al Meezan Investment Management	1.80	Pakistan
3 CIMB Islamic Enhanced Sukuk	CIMB-Principal Asset Management	0.70	Malaysia
4 CIMB Islamic Sukuk	CIMB-Principal Asset Management	0.60	Malaysia
5 QInvest Sukuk	QInvest	0.51	Cayman Islands
Eurekahedge Islamic Fund Index		0.76	

Based on 66.67% of funds which have reported January 2015 returns as at the 9th February 2015

Top 10 Annualized Sortino Ratio for ALL Islamic Funds

Fund	Fund Manager	Performance Measure	Fund Domicile
1 Meezan Tahaffuz Pension - Debt Sub	Al Meezan Investment Management	15.14	Pakistan
2 Commodity Trading - SAR	Riyad Bank	5.84	Saudi Arabia
3 Taurus Ethical B	Taurus Asset Management	3.75	India
4 QInvest Edgewood Sharia'a	QInvest	2.01	Cayman Islands
5 Alkhair Capital Istanbul	Alkhair Portfoy Yonetimi	2.01	Turkey
6 BLME Sharia'a Umbrella SICAV-SIF Global Sukuk - Class A USD	Bank of London and The Middle East	1.37	Luxembourg
7 QInvest Eagle Sharia'a	QInvest	1.31	Cayman Islands
8 QInvest GAM Sharia'a	GAM International Management	1.31	Cayman Islands
9 Alkhair Capital Index	Alkhair Portfoy Yonetimi	1.12	Turkey
10 Meezan Tahaffuz Pension - Equity Sub	Al Meezan Investment Management	1.01	Pakistan
Eurekahedge Islamic Fund Index		0.19	

Based on 56.00% of funds which have reported January 2015 returns as at the 9th February 2015

Based on reporting funds with at least 12 months of returns till January 2015 as at the 9th February 2015

Contact Eurekahedge

To list your fund or update your fund information: islamicfunds@eurekahedge.com
For further details on Eurekahedge: information@eurekahedge.com Tel: +65 6212 0900

Disclaimer

Copyright Eurekahedge 2007, All Rights Reserved. You, the user, may freely use the data for internal purposes and may reproduce the index data provided that reference to Eurekahedge is provided in your dissemination and/or reproduction. The information is provided on an "as is" basis and you assume and will bear all risk or associated costs in its use, and neither Islamic Finance news, Eurekahedge nor its affiliates provide any express or implied warranty or representations as to originality, accuracy, completeness, timeliness, non-infringement, merchantability and fitness for any purpose.

